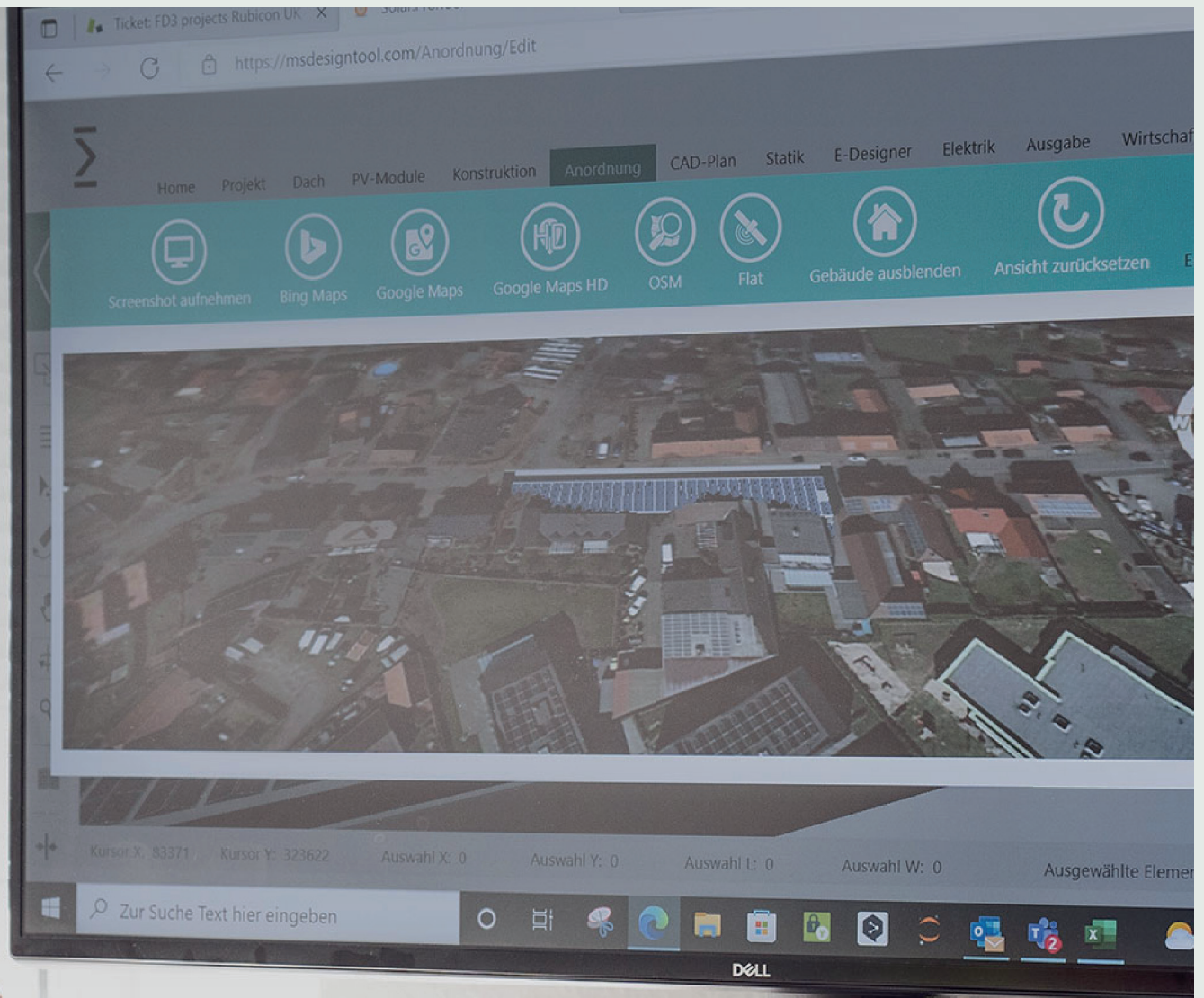


EasyTool Step-by-Step Instruction

Online Configurator



EasyTool Step-by-step instruction

Your Project Design in Less Than 5 Minutes

With the design tool you or your customers have the possibility to design a desired substructure for a building. Users can register via the link to the design tool.

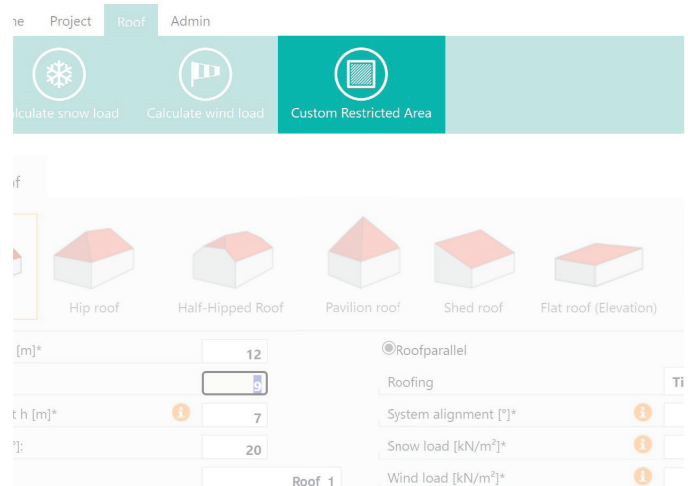
The design tool can be used to define roofs with various properties, such as roof pitch, roof covering or even interfering surfaces. The module fields can be freely arranged on the roof with the desired mounting system.

Content

1.	Roof	4
2.	PV-Modules	5
3.	Construction	6
4.	CAD & Statics	10

1. Roof

Interference surfaces can be drawn in using coordinates via **Custom Restricted Area**.

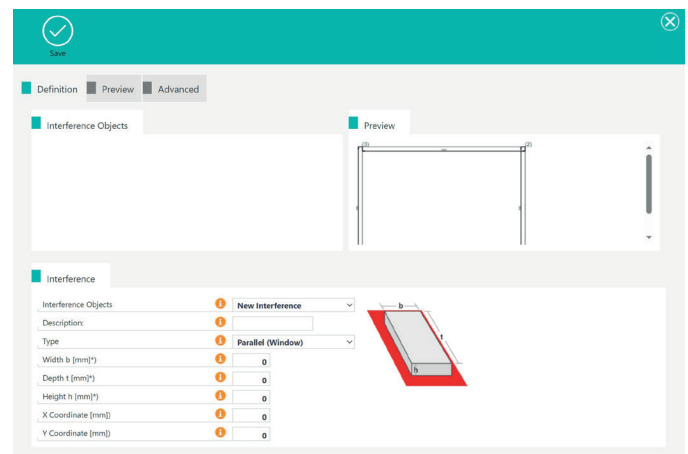


The 0 point of the coordinate system is at the bottom left.

The coordinate entered is also the point at the bottom left of the interference surface and always starts from the 0 point.

You can select under Type:

- **Roof window**
(which runs parallel to the roof)
- **Fireplace/Dormer**
(vertical upwards)



2. PV-Modules

To prevent the horizontal rails from running under the modules, tick the box next to **supports only within module area:**

Anchor type & model

Module rail

Module layout plan

Clamps

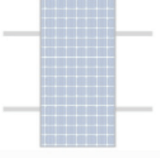
Mounting system type

Roof Hook Alu 100-7-45 complete

Roof Hook Alu 100-7-45 complete

Rail installation system

Clamping system (horizontal)



Fixation multiplier

1

Number of mounting rails per module:

2

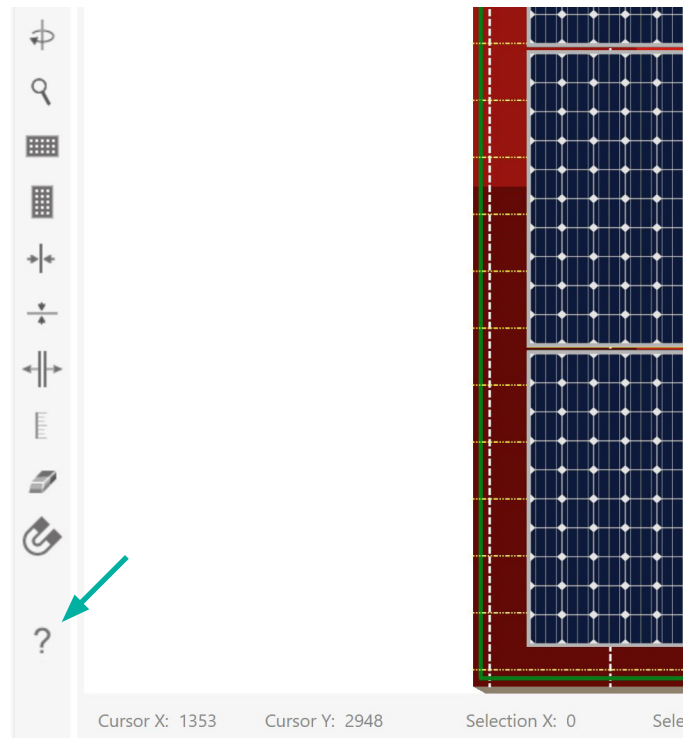
supports only within module area:

☐

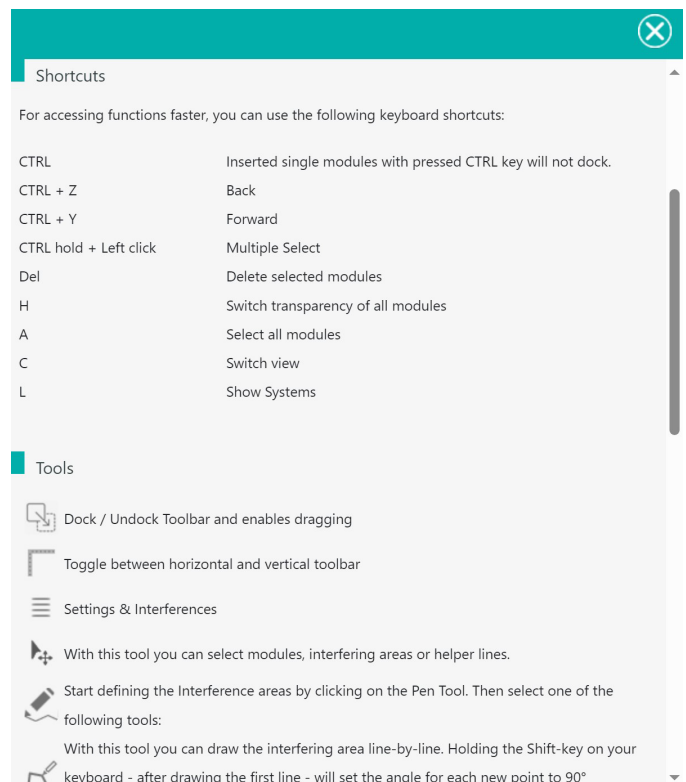
3. Construction

General information on key combinations

- Arrangement screen
- Question mark bottom left



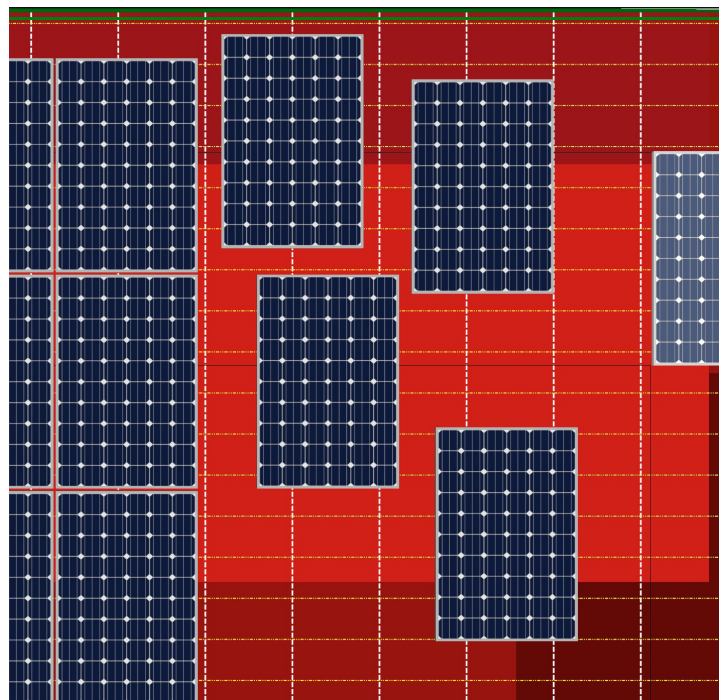
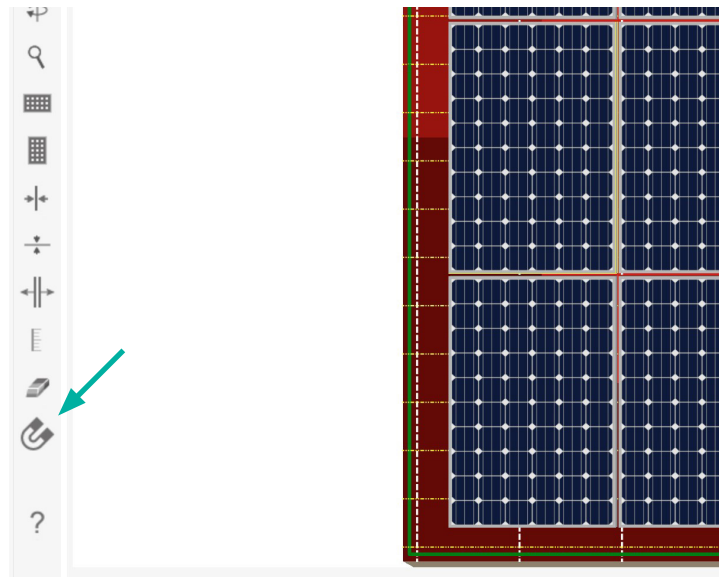
Explanation of other tools



Docking is used to bring the modules into a logical arrangement

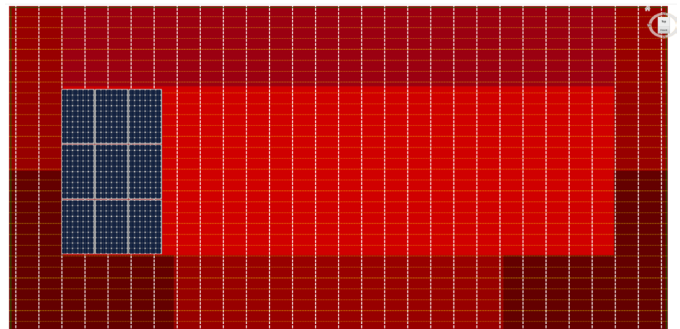
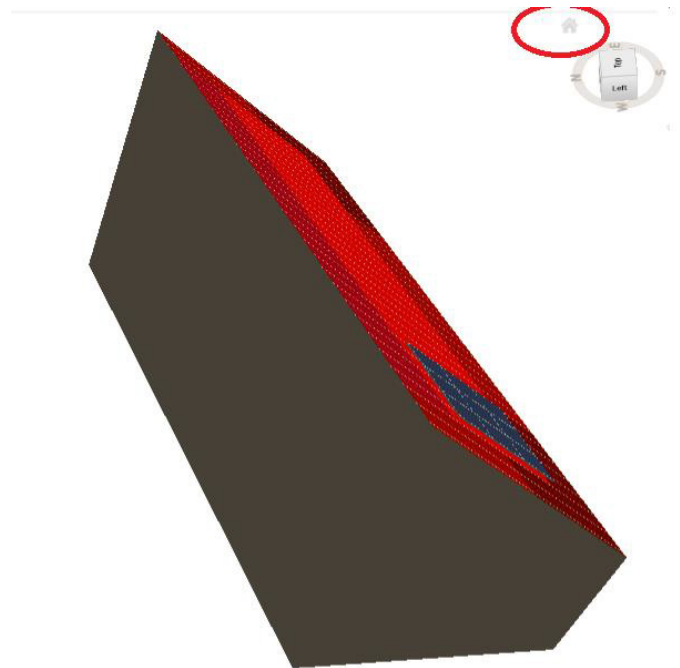
Docking can be deactivated via the shortcut M

When **CTRL** is held down, modules that are inserted individually are not docked



Example: undocked module creation

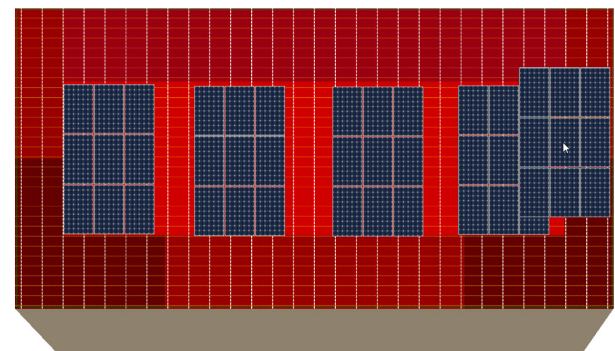
To quickly return to the standard view, press the **home button**



Copy module field:

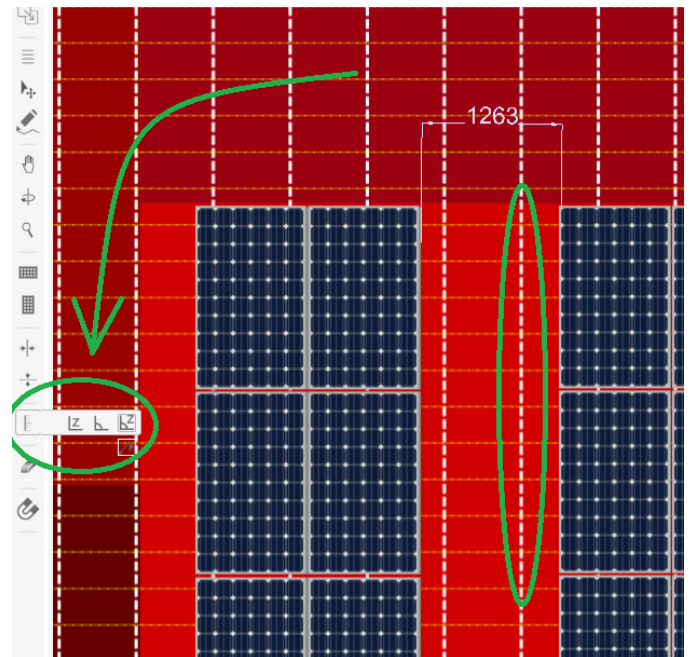
Select module field → **CTRL + D**

Press the **Escape** button to exit the mode



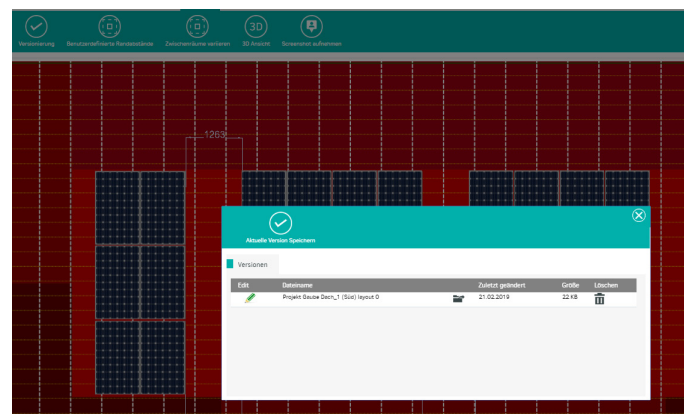
Distances can be measured using the tape measure on the left

The white dotted line stands for the rafters



Particularly complex module fields should be versioned

This means that the module fields are saved and can be reopened for any new designs.



Generally

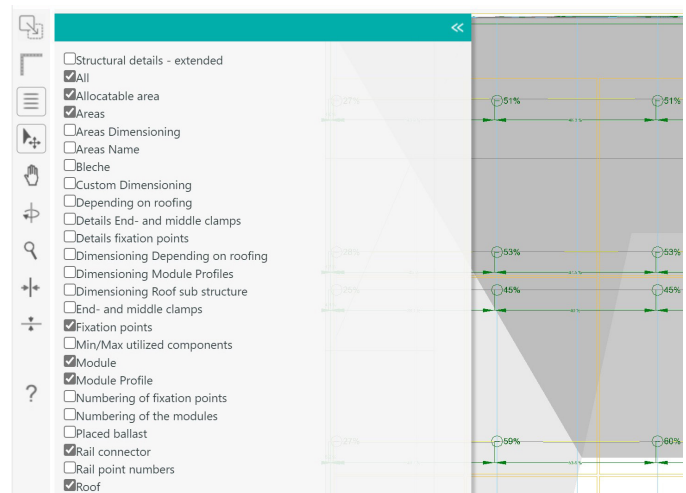
- moving with the keyboard arrow keys can make work easier, as more precise work is possible
- several modules can be selected individually by holding down the **CTRL key**.
- A row can be selected by holding down **Shift**, then clicking on the first module of a row and the last module of the row

4. CAD & Statics

Detailed assembly plan can be visualised via CAD plan

By clicking on the three bars on the left, it is possible to display further components in the plan

Individual dimensioning via the tape measure in the left-hand menu





**mounting
systems**

Rangsdorf 1
Headquarters & Production

Mounting Systems GmbH
Mittenwalder Straße 9a
D-15834 Rangsdorf, Germany

Tel: +49 33708 529 - 100
Fax: +49 33708 529 - 199

Rangsdorf 2
Warehouse & Production

Mounting Systems GmbH
Maulbeerstraße 13
D-15834 Rangsdorf, Germany

Tel: +49 33708 529 - 100
Fax: +49 33708 529 - 199

Cologne
Sales Office

Mounting Systems GmbH
Rolshover Straße 524
D-51105 Cologne, Germany

Tel: +49 221 29277 - 600
Fax: +49 221 29277 - 629

info-de@
[mounting-systems.com](mailto:info-de@mounting-systems.com)