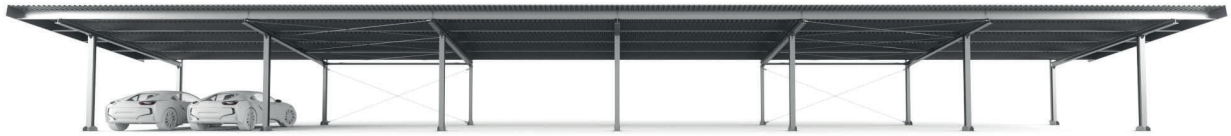




mounting systems



## E-Port Line

Configuration	1 Segment offers space for up to 2 cars
Spacing	Distance between supports 5500 mm
<p><b>Variably expandable up to 12 segments (13 posts)</b></p> <p><b>With a module size of 1.0m x 1.7m and 300 Wp</b></p>	<ul style="list-style-type: none"> <li>• 1 Segment approx. 6.5 m x 8.3 m (2 Cars) [24 Modules = 7.2 kWp]</li> <li>• 2 Segments approx. 6.5 m x 13.8 m (4 Cars) [48 Modules = 14.4 kWp]</li> <li>• 3 Segments approx. 6.5 m x 19.3 m (6 Cars) [66 Modules = 19.8 kWp]</li> <li>• 4 Segments approx. 6.5 m x 24.8 m (8 Cars) [84 Modules = 25.2 kWp]</li> <li>• 5 Segments approx. 6.5 m x 30.3 m (10 Cars) [102 Modules = 30.6 kWp]</li> <li>• 6 Segments approx. 6.5 m x 35.8 m (12 Cars) [126 Modules = 37.8 kWp]</li> <li>• 7 Segments approx. 6.5 m x 41.3 m (14 Cars) [144 Modules = 43.2 kWp]</li> <li>• 8 Segments approx. 6.5 m x 46.8 m (16 Cars) [162 Modules = 48.6 kWp]</li> <li>• 9 Segments approx. 6.5 m x 52.3 m (18 Cars) [180 Modules = 54 kWp]</li> <li>• 10 Segments approx. 6.5 m x 57.8 m (20 Cars) [198 Modules = 59.4 kWp]</li> <li>• 11 Segments approx. 6.5 m x 63.3 m (22 Cars) [222 Modules = 66.6 kWp]</li> <li>• 12 Segments approx. 6.5 m x 68.8 m (24 Cars) [240 Modules = 72 kWp]</li> </ul>
Optional components	<ul style="list-style-type: none"> <li>• Roof framing</li> <li>• Drainage</li> </ul>
Founding	<p>Concrete foundation must be provided by the customer or additionally ordered (technical documents available)</p> <p>Substructure for solar modules included in the package</p>
Requirement	No shadowing
Warranty	10 Years



Open Terrain



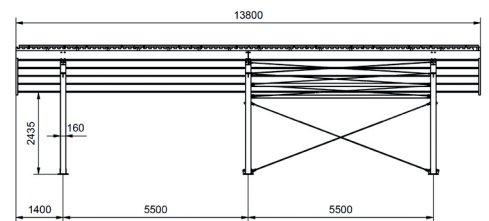
Trapezoidal sheet



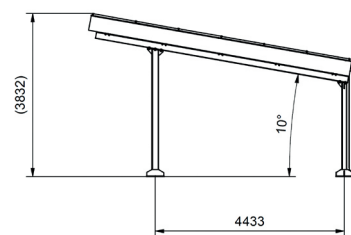
Framed module



Orientation landscape



Front view



Side view

