



mounting
systems



Light-EW ProLine

Application	Flat roofs
Roofing	For all roof coverings (also gravel)
Roof inclination	Up to 5°
Building height	Depending on wind loads on site
Module width	900 - 1052 mm
Module length	Up to 1675 mm (longer modules on request)
Pitch	10° or 15°
Supporting profiles	Aluminium (EN AW 6063 T66)
Small parts	Stainless steel (V2A)
Color	Color aluminium: plate finish
Warranty	10 years



Flat roof



East-West
Orientation



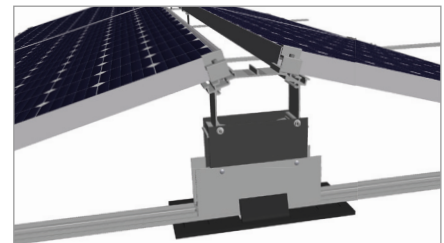
Framed
Module



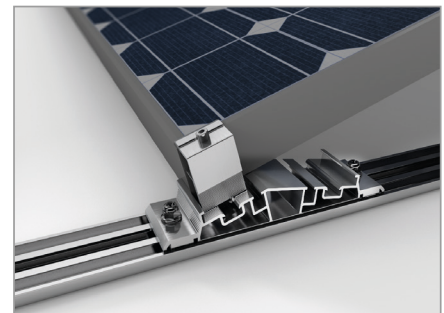
Frameless
Module



Orientation
Landscape



Detail centre support



Detail front & back support