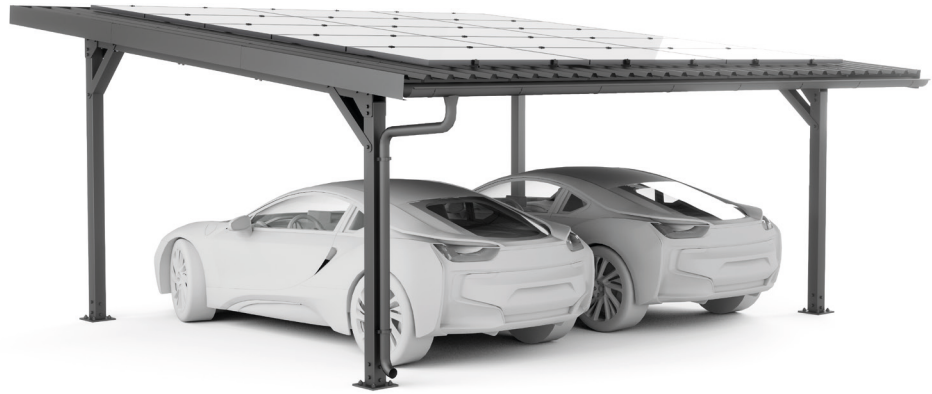




mounting  
systems



## E-Port Home Single & Double

<b>Application</b>	Open Terrain
<b>Included in the package</b>	<ul style="list-style-type: none"> <li>• Variable cable routing (cable duct can be fixed to any post with up to 3 clamps)</li> <li>• Substructure for solar modules</li> <li>• Continuous trapezoidal sheet with mesh (approx. 1.1m x 6 m)</li> <li>• Roof edging</li> <li>• Drainage</li> </ul>
<b>Foundations</b>	Concrete anchors Simple assembly without special tools
<b>Snow load</b>	Max. 0.69kN/m <sup>2</sup> – on the roof
<b>Wind load</b>	Max. 0.68kN/m <sup>2</sup> – on the roof
<b>Modules</b>	Space for up to 15 modules (1.0 m x 1.7 m) <ul style="list-style-type: none"> <li>• with a module power of 300Wp</li> <li>• total power 4.5kWp</li> </ul>
<b>Color</b>	Black
<b>Requirement</b>	No Shadowing
<b>Warranty</b>	10 years



Open Terrain



Trapezoidal sheet



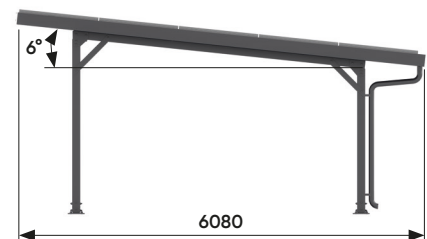
Framed module



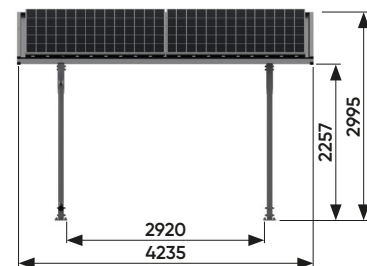
Orientation landscape



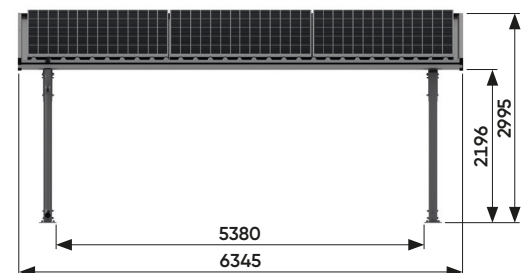
Orientation portrait



Side view



Front view: Single



Front view: Double

For further information: [www.mounting-systems.com](http://www.mounting-systems.com)

Subject to technical changes.

2021 © Mounting Systems GmbH