



## 2-Post ProLine

### Flexible Standard

This construction kit was designed for the use in small projects in ground-mounted systems. Tables can be designed differently through defined configurations, however by a flexible number of modules.

### Proven New

This system is distinguished both by an easy, functional design and a reduced use of tools. The proven Clickstone-technology is used for the module fastening. Depending on the requirements, either posts or foot plates will be available.

### Two Post

When it comes to the 2-Post ProLine, a higher structural stability is ensured even when soil or load conditions are difficult. Additionally, besides the use of ram posts, there is a possibility to connect the bars on concrete foundations by using foot plates and fix anchors.

### High Availability

In order to implement small ground-mounting projects, we have a permanent stock of these components with a delivery time of a few days. The required small components are usefully commissioned in sets.

### Maximum Service Life

Durability is a substantial feature for the 2-Post ProLine. The combination of aluminium, stainless steel as well as galvanised steel ensures a high corrosion resistance and a maximum service life.



Open terrain



Framed module

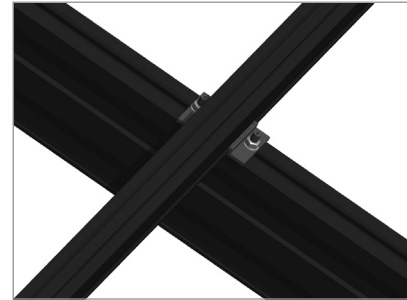


Orientation portrait

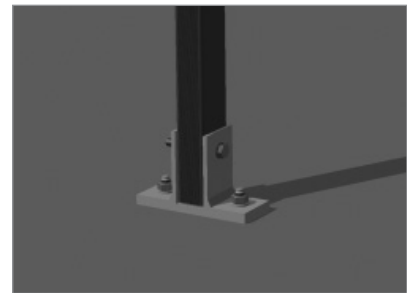


10  
Years  
Warranty

Operation Area	Ground Mount		
PV-Modules	Framed		
Module Arrangement	Up to 20 m per rack unit		
Module Orientation	Portrait, 2 Modules on top of each other		
Work Angle	20° and 30°		
Minimum Module Elevation to the ground	70- 80 cm <sup>1</sup>		
Distance of the fixation for east-west direction	Dependent on the type of module and the local circumstances		
Standards	Eurocode 1 – Actions on structures Eurocode 9 – Design of aluminium structures		
Setting Options	Sigma posts 4.2 mm at 1.2 m or 1.9 m Foot Plates with Fix Anchors		
Frame Profiles	Extruded Aluminium (EN AW 6063 T66)		
Small parts	Geomet-coated steel, Stainless steel V2A, Extruded aluminum (EN AW 6063 T66)		
Colour	Colour Aluminium: plate finish		
Warranty	10 years <sup>2</sup>		
Configuration	Module	Foundation	Clamping
2-Post ProLine 2-Portrait	Framed Modules	Ramming post Concrete In-Cast Foot plates	Clickstone- system



Fixing of the module support on the rafter



Front foot plate with fix anchor

1 Dependent on System, Inclination and Fixation to the Ground. For more details see technical system designs.  
2 Please find the exact terms in the Mounting Systems GmbH warranty document.